

BETTER TOGETHER



2023

Annual Report • spininc.org



SPIN

A Life of Possibilities



MESSAGE FROM SPIN'S PRESIDENT & CEO EMERITUS

Dear SPIN Members and Friends,

As I look back on my 41 years at SPIN, I am filled with deep emotion. With so many memories, experiences, and people that I love, retiring makes me sad and happy at the same time.

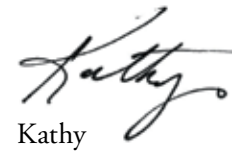
I believe we have done great things together. We can look back at a world that once shut people out and now see one far more open to people of all abilities. We can reflect on the thousands of children, adults, and families whose lives we enhanced and know our work is worthwhile. Our community has made this happen and it has taken all of us.

SPIN's mission is just as imperative today as it was 53 years ago. We have yet to see a world where people fully belong and where a Life of Possibilities is achievable for everyone. The work continues.

I know SPIN will sustain and thrive in the coming years, decades, and beyond, to keep our promise to people and their families. Judy and this entire exceptional team, together with our membership, board, and community, will do great things in the Love, Hope, Grow tradition of this wonderful organization.

I could not be more hopeful, proud of, and thankful to the SPIN family for the honor and privilege you have given me to be a part of this mission that I love.

I leave you in the best of hands.



Kathy

Kathy McHale,
SPIN President & CEO Emeritus

MESSAGE FROM SPIN'S CEO

Dear Valued Members and Friends of SPIN,

I didn't realize that my search over 40 years ago for an internship would result in me finding an organization that I love and my lifetime career. From its very special beginnings, we connect SPIN's future to our past. Our Pillars guide us and hold us accountable every day. SPIN is family and family is SPIN!

SPIN has so much to celebrate because you make our mission possible. This year we focused on the most important outcomes. We had a year of continued growth and renewed strength building and enhancing our services to meet the needs and wants of people and their families. Our Children's Programs are recognized for our top quality, family focused services. Our Community Participation Support and Employment Services are opening doors for people to engage and work as valued members of their communities, people we support and families are pleased with our high quality, safe and inclusive community homes and SPIN is a Top Workplace for the 14th consecutive year in a row!

We treasure and learn from our past to imagine and strengthen our future. SPIN's strong foundation and people to people values enable us to advance SPIN's great mission. Of course we have experienced and continue to experience economic challenges but despite underfunding and workforce issues, SPIN continues to advocate for necessary resources. Our mission remains strong and vibrant as we have the most committed, supportive and giving members and partners, and the most incredible team of caring, dedicated, talented, employees supporting people to live *a life of possibilities*. There are so many people across the lifespan who are in need of quality services and so many who we are supporting to reach their dreams and potential. We have so much more to do and we need you and your support more than ever!

Thank you for your ongoing belief and commitment!

We are Stronger and Better Together!

Be Well,



Judith Dotzman
Chief Executive Officer



Judy Dotzman, SPIN CEO



CORPORATE BOARD

DIRECTORS

David Armbrister
 Lamont Bates
 Margaret Harkins
 Courtney Mitchell
 Edward Russell
 Ronald Schwartz
 Nicholas Smith
 Andrea Temple
 Mark Zinman

OFFICERS

President
 Kathleen McHale

Chair
 Kathy Neumeister

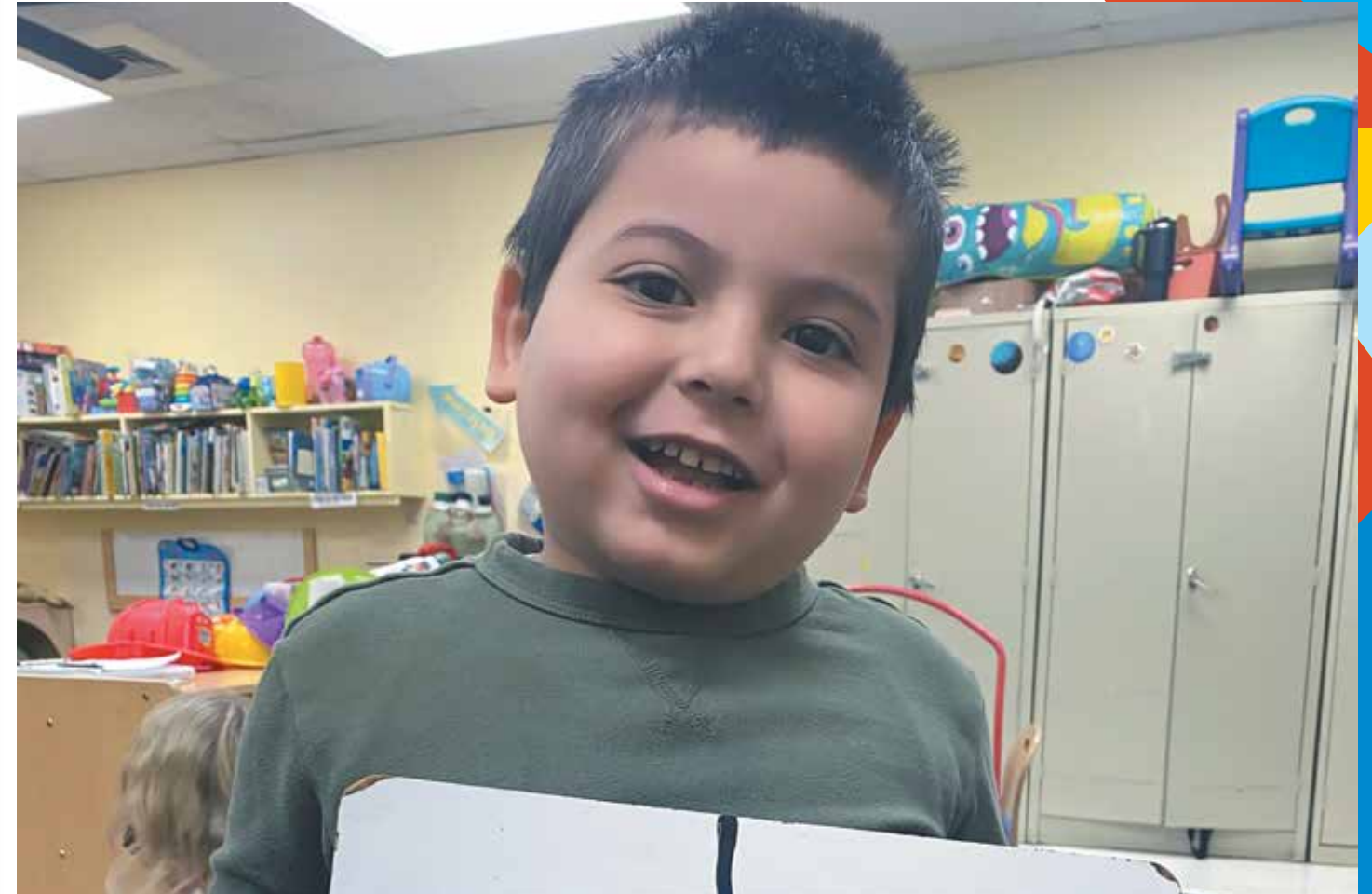
Treasurer/Financial Secretary
 Shuvankur Roy

Secretary
 Christian Muniz

TRUSTEES

Phyllis Barbera
 Marie T. Leonard
 Joseph T. Murphy Jr., Esq.

ADAM'S STORY OF LOVE, HOPE, GROW

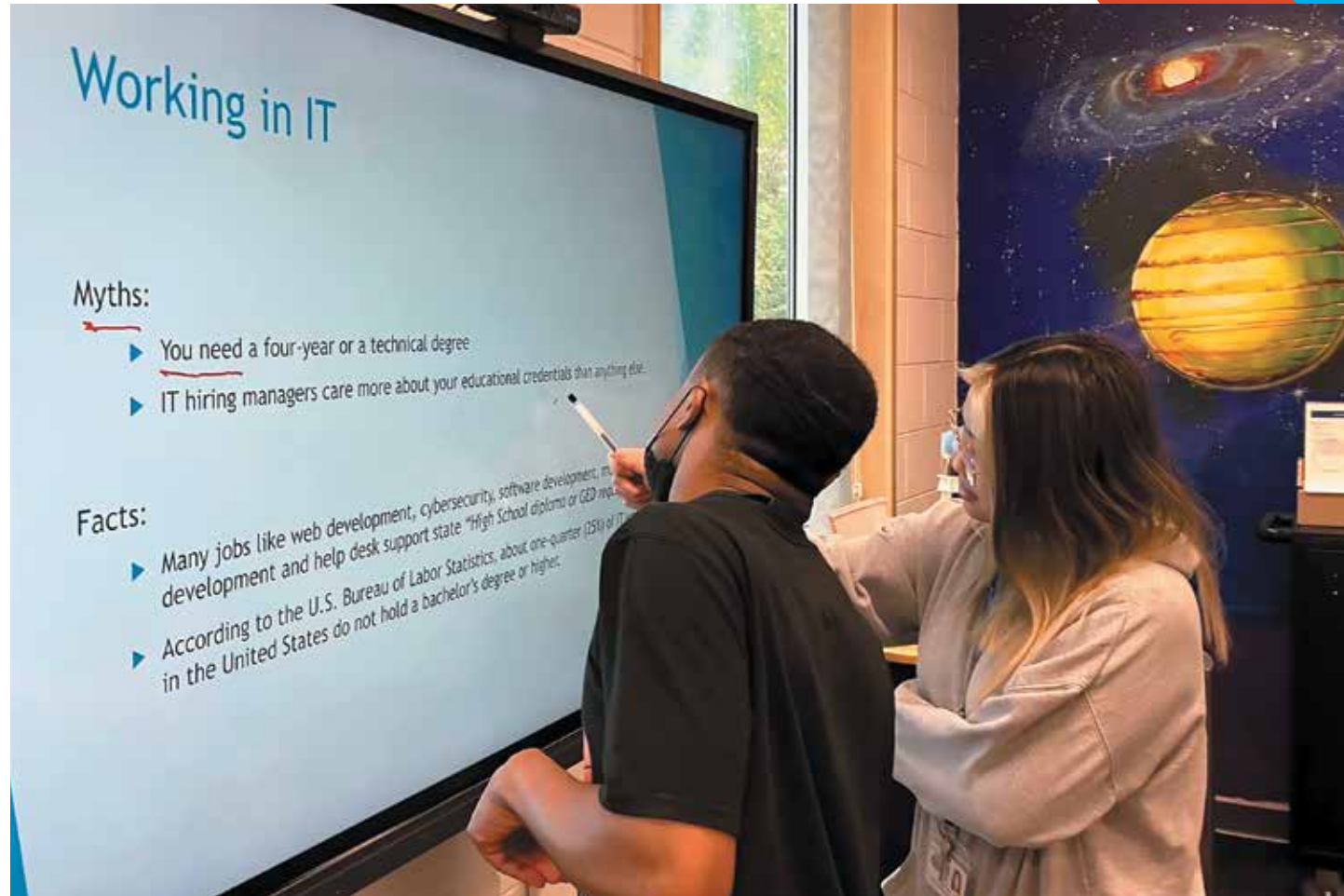


Adam came to SPIN for an autism evaluation and has grown tremendously thanks to a team with the skills to make a difference. Through teachers in his Autistic Support preschool class and his Applied Behavior Analysis (ABA) support team, Adam has made significant gains that have changed his life. He has developed from the inability to eat solid foods or communicate functionally to trying new foods and possessing strong new communication skills.

Rehab Salama, Adam's mom, said. "Adam had a hard time communicating his needs. We were grateful that we found SPIN to offer a support system and guidance. I have never met people as kind, patient, and motivated as Adam's teachers and therapists. As a parent learning about caring for a child with Autism, the journey was lonely and isolating at times. I have seen Adam grow more in the year he attended SPIN than he has all his life. His bond with his siblings has grown and we have gotten closer as a family unit."

Adam starts Kindergarten this fall ready, with his proud family knowing how to better support him and the SPIN team believing in his bright future.

EMPOWERING LIVES THROUGH TECHNOLOGY



Technology is a wonderful tool to enhance skills and create opportunities for people to engage in meaningful activities in their home and community. Through a grant from Comcast NBC Universal, SPIN was able to increase technology access and engagement. We hosted a Digital Literacy Series with workshops such as Careers in Technology, Visual Resumes, and Online Safety. This included travel & community safety apps designed for people with intellectual disability and autism and their caregivers to increase confidence and build skills in independence and connection. The 345 attendees increased their digital literacy skills by 84% overall!

Lauren and Crystal were seated front and center at almost every workshop. They already had tech savvy talents and utilized the workshops to sharpen their skills and become more independent with emailing, learning to identify and advocate for workplace accommodations, and built awareness and skills needed to safely travel in their communities. Lauren and Crystal felt empowered to continue exploring new technologies and recently added a smart lock and Echo Show to their home!

OPENING DOORS



Community Participation Supports (CPS) has the unique ability to open doors and create opportunities for people. This was true for Dan, now the YMCA's unofficial mayor and one of their best employees! Through Dan's CPS service, he was able to regularly engage in fitness activities at his local YMCA and create meaningful connections. It didn't take long for the YMCA team to recognize Dan's dedication and work ethic, and he soon became a beloved member of their community.

Dan was searching for a job where he could use his skills in a welcoming and supportive environment when he learned that the YMCA had a vacancy on the Maintenance Team. With the support of his Employment Specialist, Dan completed a working interview where he demonstrated his skills and was hired! Over time, Dan learned the necessary skills to become a valuable member of the YMCA's maintenance team. Dan's success at the YMCA is a testament to the power of community and inclusion.

Together, we were able to support Dan in achieving his goals and fulfilling his potential. With the right support and opportunities, everyone can make a difference in their community!

RAISE YOUR VOICES



What began over 17 years ago as an informal group of supported adults with a shared interest in music, has become a community jewel! Under the creative, talented, committed, caring direction of Glenn and Mikki Kornegay, the SPIN Choir celebrates true diversity, equity, inclusion, access, and belonging. It also inspires and amazes all who have the opportunity to see them perform. Creative and performing arts has led to tremendous outcomes for choir members, by connecting people to their communities personally and professionally. The power of music heals and as Glenn and Mikki say, "the Choir sings from their hearts and everyone is effected because it has to touch you".

It takes a village and the Choir is fortunate to be supported by Amy Crichlow, Choir Coordinator extraordinaire, Bob Lutts, Jennifer Hughes, Caitlyn Diviny, Mindy Lutts and the full SPIN community!

The power of music touches us in many different ways. The SPIN Choir demonstrates this in their own uniqueness by raising their voices and taking us all on their journey! Catch the joy!

ROCKIN' TOGETHER



As we celebrate 10 years of service in the Lehigh Valley, we are thankful for the support of our community and partners. When we moved into our Suite at 2158 Avenue C in 2013, the team at Cumulus Media immediately welcomed us to the building. Everyone who visits SPIN is delighted to see the bright signs across the hall showcasing the best radio stations in the Lehigh Valley including Cat Country 96, 99.9 The Hawk, and 100.7 WLEV.

Jason, who is supported in our Community Participation Supports, was interested in radio and dreamed of being on-air. The team at Cumulus welcomed him with a tour, and developed a Public Service Announcement that he broadcasted live on the radio. It was truly a dream come true for him and the start of a decade long partnership.

Since then, so many have benefited from studio tours, learning about broadcasting, and spending time with their favorite radio personalities! The team at Cumulus has shared their music and talents with the entire SPIN family at events and most recently at SPIN's celebration of 10 years in Lehigh. We are grateful and look forward to rockin' together for many years to come!

SPIN 2023: A YEAR OF STRENGTH
We are Stronger and Better Together!

YOUNG CHILDREN LEARNING IN 4 STAR EDUCATION

634 children learning & developing in high quality early childhood educational services



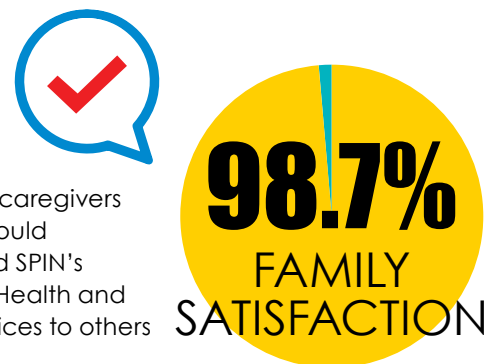
226 PEOPLE ACHIEVING THROUGH COMMUNITY PARTICIPATION SUPPORTS

226 people received ongoing services in Community Participation Support Services



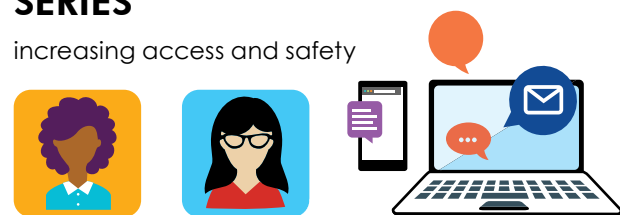
292 PEOPLE WE SUPPORT ARE EMPLOYED & EARNED **\$1,045,427**

98.7% of all caregivers surveyed would recommend SPIN's Behavioral Health and Autism Services to others



300 PARTICIPANTS IN THE COMCAST DIGITAL LITERACY SERIES

increasing access and safety



18 DIRECT SUPPORT PROFESSIONALS have achieved national certifications

29 DIRECT SUPPORT PROFESSIONALS have enrolled nationally

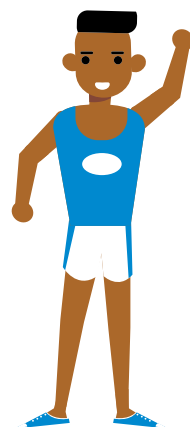


TELEMEDICINE VISITS DELIVERED

226 Emergency Room visits avoided through SPIN's investment in telehealth direct access to ER physicians

2,351 HEALTH SESSIONS ATTENDED

2,351 people attended Healthy Lifestyle Sessions to improve their overall wellness



63 COMMUNITY-BASED LOCATIONS SUPPORTED

by SPIN's Applied Behavior Analysis Team



242 ADULTS LIVED HEALTHY, FULFILLING LIVES in SPIN supported homes



46,719+ HOURS OF TRAINING

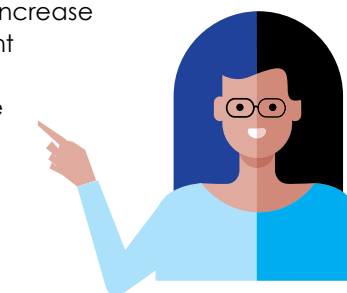
provided 46,719+ hours of training for employees and people we support



501 CHILDREN received behavioral health services

DIVERSITY, EQUITY & INCLUSION INCREASE

Diversity, Equity & Inclusion: 6.5% increase in People of Color in management & administrative positions. 34% of employees promoted or hired are People of Color



\$500,000 CAPITAL IMPROVEMENTS

invested in renovations and initiatives to residential homes and program areas



\$375,066+ DONATIONS

received by people believing in our mission

INCREASED 5%



14TH CONSECUTIVE YEAR AS A TOP WORKPLACE
 Named to Top Workplaces for 2023 – 14th consecutive year and ranked #3!



HOME IS WHERE THE HEART IS



Lifesharing is living and sharing life experiences with supportive persons who form a caring household. It involves close personal relationships and being part of a family.

Maceo joined Mary's home over 30 years ago. Through life changes including moves, births, vacations to exotic and interesting places, raising pets and children to aging, they have chosen to take this life journey together, experiencing success and challenges as a family unit.

Donny joined Dana & John's family 15 years ago. He has experienced their wedding, their children's weddings and being an uncle to their many grandchildren. Cruises and family fun as well as serious medical challenges are part of their story. Donny's strength came from this relationship based upon trust and his desire to return to his home with Dana and John standing steadfast in their commitment to him.

These men and their families wrote history as the first Lifesharing partners at SPIN. These are stories of life shared for two men who began their childhoods in institutions to ultimately having a loving home. Together they found patience, kindness, laughter, and happiness. Together they found their best life.

TREE OF POSSIBILITIES



In celebration of SPIN's 50th Anniversary, a campaign honoring our supporters, was launched. We envisioned a "Tree of Possibilities" and Dennis Haugh, with the help of Ed Haugh, brought the vision to artistic reality. This beautiful mural is now in SPIN's Training Center, as a focal point for all to share.

The tree is a beautiful representation of how a unique group of individuals can make a difference and create history. It confirms that people of all ages, abilities, backgrounds, and cultures are better together.

Looking at this extraordinary depiction, you cannot help but be reminded of the incredible life of SPIN. Each name tells a story that is significant to the past, present, and future of SPIN's mission over 50+ years.

It is said, "In trying to make a big difference, don't ignore the small daily differences we make" Each leaf represents people, making a small difference which, together, has transformed how people with disability are seen today. Coming together in 1970 was the beginning, staying together we forged ahead, stopping at nothing, brought us to a Life of Possibilities.

SPIN RECOGNITION

TOP WORKPLACES 2023

Philly.com, The Philadelphia Inquirer and Daily News

SPIN was a Top Workplace for the fourteenth consecutive year and was ranked #3 receiving a special **Leadership Award**

POINTS OF TRANSFORMATION AWARDS

The City of Philadelphia Department of Behavioral Health and Intellectual Disability Services

Trailblazer Award - Kathy McHale

Early Intervention Award - Michele Crandley

Treatment Staff Award - Lamar Gilliam

Residential Award - Jerome Johnson

DIRECT SUPPORT PROFESSIONAL RECOGNITION AWARDS

The Alliance for Community Service Providers

Embracing Diversity Award - Antonio McCall

EMPLOYER OF CHOICE

In recognition of SPIN's welcoming and sustainable employment practices

KEYSTONE STARS

Pennsylvania Office of Child Development and Early Learning

Awarded the highest quality ratings for all four early childhood education centers

NATIONAL ASSOCIATION FOR DUAL DIAGNOSIS (NADD) ACCREDITATION

SPIN's Behavioral Health Residential program was accredited for excellence in dual diagnosis treatment

EVIDENCE-BASED PRACTICE DESIGNATIONS IN BEHAVIORAL HEALTH SERVICES

CBH has redesignated SPIN in the areas of Applied Behavior Analysis (ABA) & Ecosystemic Structural Family Therapy (ESFT)

GOLD EQUITY AWARD

Pennsylvania's Equity in Early Childhood Education Champion Gold Awards

Statements of Financial Position

	Year Ended June 30, 2022	Year Ended June 30, 2021
Assets		
Current assets we expect to use in one year	\$ 19,407,406	\$ 21,256,331
Net book value of property, building and equipment	\$ 20,766,457	\$ 20,045,827
Total Assets Available	\$ 40,173,863	\$ 41,302,158
Liabilities and Net Assets		
Obligations for the coming year	\$ 9,237,493	\$ 9,038,059
Obligations to pay through 2040	\$ 7,108,813	\$ 8,510,482
Total Obligations	\$ 16,346,306	\$ 17,548,541
Leaving Net Assets of		
Unrestricted	\$ 23,752,625	\$ 23,680,685
Permanently Restricted	\$ 74,932	\$ 72,932
Total Net Assets	\$ 23,827,557	\$ 23,753,617
Total Liabilities and Net Assets	\$ 40,173,863	\$ 41,302,158

Statements of Activity

	Year Ended June 30, 2022	Year Ended June 30, 2021
Revenues		
Commonwealth of PA/Office of Developmental Programs	\$ 57,227,138	\$ 53,579,556
Childhood Education Grant Income	\$ 1,784,299	\$ 2,020,689
CARES Act	\$ 1,933,404	\$ 2,212,675
Philadelphia Community Behavioral Health	\$ 8,402,600	\$ 8,431,788
Head Start/Pre-K and Other Federal, State and Private Grants	\$ 4,959,273	\$ 4,038,631
Service Contracts and Other	\$ 3,760,877	\$ 8,547,371
Net Contributions	\$ 385,955	\$ 283,375
Total Revenues	\$ 78,453,546	\$ 79,114,085
Expenses		
Program Services	\$ 70,332,323	\$ 66,900,484
Administrative and Fundraising	\$ 8,047,283	\$ 6,772,948
Total Expenses	\$ 78,379,606	\$ 73,673,432
Change in Net Assets for the Year	\$ 73,940	\$ 5,440,653
Net Assets, Beginning of the Year	\$ 23,753,617	\$ 18,312,964
Net Assets, End of the Year	\$ 23,827,557	\$ 23,753,617

Giving Partners
7/1/22 - 6/30/23

Thank you for your generous donations to SPIN.

Your donations help provide the highest quality care and services to children and adults with autism and intellectual disability and early childhood education. With your help, we will continue to provide a Life of Possibilities for all. You truly make the difference for the SPIN community, and we are extremely grateful!



\$50,000+	Rebecca & John Randall	Siegal Family Fund	Deborah & Jon Ridge
Joel & Sharon Koppelman	Scott Rosnov		Gregory Rossi
	Eleanor Scheidegg	\$500-\$999	Gregory Rossi Plumbing
\$25,000 - \$49,999	Ronald & Dina Schwartz	Kunbi Adeosun	Edward & Susan Russell
Andrea & Geoff Temple	Mark & Beth Zinman	Regla Baez	Zeta Smith
DeMarco Contracting & MTS Masonry Inc.		Stewart & Phyllis Barbera	Christopher Spross
	\$1,000-\$2,499	Felicia Brosius	Jeffrey Weisman
\$10,000-\$24,999	Jeffrey Beck	Frank & Leslie Brown	Jennifer Williams
Trinity Asset Protection, Inc.	Frank Dellisanti	Bill Cahill	Informed Systems, Inc.
	Carole Foley	Cahill Maintenance Service Inc.	Kingsbury
\$5,000-\$9,999	Greg & Megan Grant	Maria Carosella	Philadelphia Federal Credit Union
Judith & Douglas Dotzman	Doug Lane	G. Richard & Carol Chapman	Prodigy Pest Solutions
Mary Finnegan	Jack & Carol Lenhart	Kate & Lou Citro	Professional Planning
Oliver Galbert	Meaghan Lutts	Annemarie Clarke & David Buch	Torresdale Women's Committee
Susan & Robert Ivey	Seymour & Carol Mager	Anna Coccitti	
Mindy Lederhandler Lutts & Bob Lutts	Kieran & Gloria McKenna	Barbara & Neil Demchick	\$250-\$499
Kathy & Robert McHale	Kieran McKenna Flooring Inc.	Sheila Dolan	Nancy Browning
Edward Schuman & Amy Zucker	Courtney Mitchell	Kathy Drew	Robert Castorani
Kids N Hope Foundation	Erica Peruzzi	Janet Galbert	Suzanne Cerruti
Mural.co	George & Patty Poporad	Debra Gold	Kim & Greg Chapman
	Cynthia & Mike Porter	Marie Grimaldi	Andrea Consigny
\$2,500-\$4,999	Joseph Rutkowski	Marie Leonard & Michael Zaneski	Jefferson Cousins
Jennifer & Michael Hughes	Pamela & Theodore Silver	Kevin & Colleen Lynam	Dorothy Czarnecki
Ken Karle	Mat Slakoper	Rose Mee	Sarah Dion
Willits Pharmacy Services, Inc.	Mat's Pharmacy & Medical Supply	David & Sandi Miazio	Lance & Ally Dotzman
Scott Koerper	Tom Tirney	Peter & Rosalyn Minotti	Justin & Danielle Dotzman
Scott Mechanical, Inc.	Arlington Heritage Group	Joseph O'Brien	Jennifer Dragon
Patrick & Michelle McCormick	David & Patricia Valeno	Cindy O'Neill	Michele Dwyer
Chester Orzechowski	Pat White	Judith Perry	Janet & Chris Edwards
Patricia & Joseph Parisi	Families Behind the Badge Children's Foundation	Diane & Richard Peterman	David Elker
Rocco Pugliese	Sasser Family Companies	Uplekh Purewal	Martha Fraser
			Jamie Garrity

Giving Partners
7/1/22 - 6/30/23

Marcia Giarratana	Steuben Lodge Charity Foundation	Fran Field	Renee Liss
Cassandra Gilreath		Megan & Chris Fleming	Erica Lowry
Sandra Goodstein	\$100-\$249	James Flynn	Peter Luftig
Pat & Arnold Greenspon	Teresa Abercrombie & John Furlong	Kimya Forouzan	Chelsea Lutts & Andy Lane
Sharon Heileman	Robert C. & Sally R. Adams	Lori Frank	Lenny Lutts Sr.
Stephen & Mary Jane Hopkins	Beth Ann Marin	Michael & Betsy Futryk	Joe Lutz
Colleen Horcher	Sara Arch	Joanne Gillen	Robert King
Mary Jacobs	Julia Bailey	Michael Glauberman	John Malcolm
Thomas Krajewski	Frank Barbato	Steve Glazier	Carla Manno
Cindy Latta	Ronald & Ellen Becker	Nancy Gonzalez	Kelly Marascio
Richard Markham	Jeri Betesh	Andre' Graves	Christina Marczak
Mary McGovern	David Binder	Jeff Hall-Gale	Jodi & Robert Marks
Austin Meehan	Candice Bogar	Margaret Harkins	Kenneth & Sandra Marley
Mike & Nancy Metzger	Frank & Margeret Breslin	Monica Harris	Rubylyn Martinez
Thomas & Deborah Miller	Teresa Brown	Mary Lou Haughney	Dina McCaffery
Northeast Washer Service	Joe Buckley	Angela & Michael Hennessey	Rosesylvia McDonald
Kristen & Nelson Montanez	Peg Capasso	Linda & Ken Hucke	Randal & Zelia McDowell
Kathy & Terry Neumeister	Jay Chen	Helen Hughes	John & Theresa McMahan
Robbin Nocella	Roseann Ciesielka	Kenneth & Shirley Jernigan	Corey Mee
Brenda & Joseph Paglione	Sarah Cohen	Bruce & Judy Johnson	Donna Meehan
Robert & Karen Peterman	Dena Condron	Richard Kassoway	Frank Menna
Michael Porter	Christopher Conte	Martin & Heledona Katro	Maria Rita Mentzel
Patricia Shinn	Chris Coyne	Lynn Keeley	Melissa Mezicco
Laura & Eric Silsby	Marjorie Curtis-Cohen	Catherine Keenan	Sherri & Theophile Mignatti
Gina Smith	Helene & James Debow	Stephen Keiser	Paul & Wendy Miller
Kathleen Soda	Patricia Debow	M H Keyes	Kathleen Moore
Ebony Stevens	Jeanee Diaby	John & Kathleen King	Kimberly Mormello
Kathy Sykes	Lisa Diliberto	Cheryl Kirby	Jane & Bob Mullin
Martha Theirl	Suzanne Dillon	Joel & Janice Kramer	William Murphy
Marla Tyler	Maureen Dimarco	Morris Kurtzman	Joseph Murphy
Daniel Way	Sam & Jodi Domsky	Dolores Kuterbach	Adele Musicant
Sibo Zhang	Arthur & Kathy Donley	Sylvia Lamont	Narek Nikoghosyan
Dunphy Ford	Yvonne Douglas	Fern Lapoten	Natasha Nunez
Emerald Business Supply, Inc.	William & Joan Engle	Danielle Lawrence	Chris Packer
Nissan of the Main Line	Donna Fabius	Eileen Leahy	Angela Pelz
OMNIA Group Architects	Diane Fanelli	Megan Leighton	Robert & Nancy Phipps
ShopRite of Roosevelt Boulevard	Ethelinda Felder	Jim Levi	Dolores Queene
		Ron Lincow	Chris Rassekh

Giving Partners
7/1/22 - 6/30/23

Diane Repash	The MNAO R&D members	Richard & Stella Gatt	Arti Patel
Megan Riley	Trane	Karen Gonsiewski	M. Pigassou
Marianne & James Roche	Tri-County Pediatrics Inc.	Chelsea Greenspon	Christina Potak
Michele Rosenfelt		Marlane Guttman	Mike Quattrone
Steven Roth	\$50-\$99	Eileen Himes	Sandy Rea
Jenifer Schaadt	Attakouma Abotchi	Antoinette Hinkle	Ellen Reeves
Michael & Amy Schmidt	Richard Adamsky	Belle & Raymond Hirn	Debra Resnick
Donovan Schneider	Ron and Lisa Alper	Nick & Kelly Holdofsky	Cookie & Pat Rojas
Kathleen Schultz	Bettina Astore	Anne Horowitz	Maureen Santina
Theresa & Willaim Schultz	Elizabethann Auld	Shante Jenkins	Lauren Savage
Ursula Siebeneich	Diane & Bob Beal	Shakhanda Jiminez	Rita Schmidt
Stuart & Karen Skinner	Paige Berger	Tiara Jones	Louie Scottoline
Alvina Smith	Sarah Berman	Matt Kolla	Gary & Eleanore Sheffy
Rick Sorkin	Donna Bernstein	Beth Konde	Miwa Shen
Joseph Spurduto	Amy Bierhoff	Christopher Kosherzenko	Keith Shepard
Karma Strydesky	Angela Bleemer	Andrew & Claire Kushnerock	Barbara Shotz
Christopher Temple	Susan Blight	Dana Lanfranchi	Janet Sicilia-Heisler
Colette & Michael Tomeo	Dwanae Bowens	Wiliam Lashner	Barbara Sklar
Mark Toro	Sarah Brechbill	Jessica Lax	Judith Slagoff
Toro Fence Company	Taryn Brown	Melissa Leaver	Nolan Slaweski
Scott & Holly Troilo	Michelle Campbell	Martha Leva	Ben Slutzky
Colleen Vanderslice	Eden Caprood	Corey Lutts	Pam Smith
Emily & Charles Wagner	Elizabeth Cervantes	Wendy Mallis	Karen Smith
Elizabeth Weiner	Tendesai Chieza	Carol Maltby	Nicholas Smith
Yoko Welch	JP Clark	Barbara & James Marinan	Richard & Lois Stern
Kimberley Williams	Mario Cohen	Donna Martin	Noriko Swift
Mary Young	Terence Collins Jr.	Lindsay Matthews	Paula Urmson
Adam Zinman	Cindy Costello	James & Carolyn McCoy	Varun Ved
Burns Funeral Home, Inc.	Michele Crandley	Johanne McKenty	Jamie Viviano
Express Employment	Varney David	Patrick Mcmenamin	Kathleen Wible
Northeast Philadelphia	Frank & Theresa Debaecke	Carolyn & Buddy Mee	Lauren Wills
Geoffrey Temple Family	Sloan Diamond	Tom Melita	Jessica Witkin
Medical Associates PC	Caitlyn Diviny	Kaitlin Miller	Loren Wong
Hopkinton Women's Club	Michele Felix	Arthur Morgan	Ron Yean
Mike Loves HVAC, LLC	Joan Fluehr	Leslie Movsesian	Gloria Zingaro
Pat's Pizzeria &	Amy Forsyth	Deborah Notarianni	Semanoff Ormsby Greenberg
Spaghetteria Inc.	Allison & Kirk Fullerton	Marjorie Olsho	& Torchia
The Baupost Group	Nancy Gaffney	Marco & Katy Paparo	
The Conversation Factory	Elizabeth Gates		

Giving Partners
7/1/22 - 6/30/23

Grants	Aetna Employee Giving Campaign	Special Giving/ In Kind Gifts	St. Jerome's Parish
Franklin Mills Advisory Council	Vanguard Employee Giving Campaign	Dr. Jessica Aquino	The Alliance of Community Service Providers
Rite Aid Foundation	PricewaterhouseCoopers LLP	Karen Sharkey	Trane
Comcast NBCUniversal	Ally Employee Giving Campaign	Mike Spurduto	Catholic Social Service
	FedEx Employee Giving Campaign	Cradles to Crayons	Custodes Pacis Lodge 2085
Corporate Employee Giving Programs	UPS Employee Giving Campaign	Deneen's-Helping-Hands	Fawn
Exelon Corporation Employee Giving Program	Deloitte Employee Giving Campaign	Flames Police & Fire Footbal Team	Honey's Angels
Boeing Company	Comcast NBCUniversal Employee Giving Campaign	Madison Adoption Agency	One WarmCoat for Adults & Kids
Pfizer Foundation Employee Giving Campaign	TD Bank Employee Giving Campaign	Schneider Electric	
United Way			
Wells Fargo Community Support Campaign			



SPIN EVENTS

Annual Membership Campaign - ongoing
 Member Appreciation Gala
 Golf Tournament
 SPIN Live
 Partners for Possibilities
 Hailey Temple Memorial 5K

www.spininc.org/events

THANK YOU



SPIN

A Life of Possibilities



#SPINstrong