



# Celebrating our IMPACT



SPIN

1970-2025

*Celebrating 55 Years*

2025 annual report

[spininc.org](https://spininc.org)





## MESSAGE FROM SPIN'S PRESIDENT & CEO

Dear Valued Members and Friends of SPIN,

If you close your eyes, you can imagine that December night in 1970 when six parents of children with 'special needs' and one teacher, David Losinno stayed after the meeting at the Torresdale School to begin making the dream a reality – Camp SPIN filled with fun, love, hope, connection, and people who believed that everyone matters and thrives with the right support.

SPIN's mission was born, meeting the critical needs of the community while creating an inclusive organization. We have learned so much from our Founders and we have so much to celebrate because all of you make our mission possible! SPIN's culture aims to provide an environment that engages and inspires each other. Our Pillars of People First, Professionalism, Performance Excellence and Productivity guide us as we support a Life of Possibilities for everyone.

We are proud to share SPIN had a year of continued growth while enhancing our services to meet the needs and wants of people and their families. Our Children's Programs are recognized for our top quality, family focused, evidence-based services. Our Community Participation Support and Employment Services are opening doors for people to engage and work as valued members of their communities. Our Residential Service was designated as a top tier provider of Clinically Enhanced services and SPIN is a Top Workplace for the 16th consecutive year in a row!

SPIN's strong foundation and people to people values enable us to advance our great mission. We continue to advocate for necessary resources, and our mission remains strong and vibrant as we have the most committed, supportive and giving members and partners, and the most incredible team of caring, dedicated, talented, employees supporting people to live a life of possibilities.

Please enjoy the stories presented in this Annual Report as we highlight and celebrate SPIN's great impact of high quality, inclusive supports, and services.

We have so much more to do, and we need you and your support more than ever!  
Thank you for your ongoing belief, commitment and partnership.

*With Deep Appreciation,*

A handwritten signature in black ink that reads "Judy".

*Judy Dotzman*



# CORPORATE BOARD

## Trustees



Phyllis Barbera



Joseph T. Murphy Jr., Esq.



Marie T. Leonard



Andrea Temple

## Officers



*President*  
Judy Dotzman



*Chair*  
Kathy Neumeister



*Treasurer/Financial Secretary*  
Courtney Mitchell



*Secretary*  
Christian Muniz

## Directors



David Armbrister



Lamont Bates



Margaret Harkins



Rosemary Karabinos



Patti Parisi



Shuvankur Roy



Ronald Schwartz



Nicholas Smith



Mark Zinman



## THE PERFECT FIT

From the beginning of her employment journey, Mary Madeja knew she wanted to work in a “beautiful” environment. She is truly a beauty herself, a fashionista at heart, and treasures her accessories and makeup. Mary started her career at Phoebe Floral, where she most enjoyed fashioning displays of gifts and jewelry. She also traveled to New York City and assisted in merchandising and selecting products for the store’s showcases.

Having a flare for fashion, Mary chose to explore new opportunities in the fashion industry and obtained experience at Clothes Mentor, a women’s resale store for name-brand and designer clothing before the store closed unexpectedly in 2023. Having a flare for

fashion, Mary remained determined to find the perfect fit!

In March 2024, Mary joined the Burlington team and a perfect match was made! Working alongside her Manager and Employment Specialist, Mary learned to arrange shoes and accessories, quickly gaining confidence in her role. She accepts challenges and learns new tasks that match her strengths and interests. Mary continues to thrive, takes immense pride in her work, and rarely misses a day. Mary’s work contributes to the overall success of Burlington’s Trexlertown store, which has been recognized by regional leadership for consistently meeting and exceeding expectations.







# POWER OF CONNECTION

Over the past year, SPIN's Community Participation Supports celebrated the power of connection and creativity through two remarkable media ventures, SPIN News and SPIN FM. From a creative spark, SPIN News and SPIN FM evolved into dynamic weekly broadcasts and podcasts. Each SPIN News episode delivers updates on current events, weather, Philadelphia sports, celebrations, DREAM Team health tips, Community Explorations, accessibility features, Employment spotlights and more, all created with purpose and personality. SPIN FM podcast highlights local voices and resources, deepening community ties, and opening doors to unique employment opportunities.

Together, SPIN News and SPIN FM exemplify how we celebrate community, growth, and a Life of Possibilities. These not only entertain, but they also empower the voices of those we support and our communities. Team members sharpen vital skills like communication, collaboration, creativity, and assistive technology. Most importantly, they share their authentic voices.

Each week, people in our community tune in with excitement, reflecting on our shared commitment to community, inclusion and storytelling. We proudly celebrate the growth of these experiences, a powerful reminder that when creativity and community come together, everything is possible.

# LOVE HOPE GROW

Lily-Noelle's parents put their trust in SPIN when she began in the childcare program. Lily had been receiving support through the birth to 3 early intervention team during her first two years in childcare. As her third birthday approached, the team recommended having Lily receive her services within one of SPIN's Autistic Support Classrooms to work on social and communication skills. Lily began this school year speaking in 1–2-word phrases and needed one-to-one support to follow the class routine and to stay engaged in learning tasks. Lily relied on adults for social interactions and had minimal interest in playing with her peers, but that quickly began to change. Lily's social skills and confidence soared as

her language skills progressed. Now, she engages in imaginative play with her peers, often taking on the role of doctor, baker, store clerk or singer. Lily no longer requires one-to-one support as she is now able to independently follow the classroom routine and is often a role model for her peers. She has spent the summer practicing her skills and being included in a typical preschool classroom to get herself ready for her 1st day in an inclusive preschool class this September. Lily's story of growth will continue with SPIN into next year and beyond.







## REACHING FOR THE STARS

Ryder attends SPIN's Applied Behavior Analysis Early Childhood classroom. Ryder has made impressive gains in communication, play and social skills! He is learning new words and making connections with others every day!

Ryder's mom, Tanchanika, is a fierce advocate and an active participant in Ryder's services. She wants other parents of children with autism to feel empowered to advocate for their children.

Ryder's mom said "Thank you so much to the entire SPIN team for not only seeing Ryder, but for believing in him, nurturing him, and celebrating him every step of the way. As his mother, it means

everything to know that he is surrounded by a village of professionals who truly care not just about goals and checklists, but about who Ryder is. From the moment he became a part of your classroom family, I've watched a light come alive in him. He's not just learning he's thriving. His voice is getting stronger, his confidence is blooming, and he's finally being understood in a world that once felt so confusing.

Ryder, you are the reason I push so hard. You're so loved, so special, and so destined for greatness. Keep reaching for the stars, because you were born to shine."



## SHANTE'S WELLNESS JOURNEY

Shante is achieving outcomes one day at a time. She has developed great relationships with peers, neighbors, and feels part of the community for perhaps the first time ever. They see and understand Shante as a whole person with both strengths and challenges, good days and bad days, and they encourage and lift her up to put her best foot forward. Shante is also an active and valued member of the SPIN Choir and was able to showcase her singing skills at SPIN's annual Partners for Possibilities Gala.

She is an amazing self-advocate, letting her SPIN team and doctors know how she feels and what she needs. She asks questions to understand recommendations and requests support from her trusted team members. She is showing a growing

commitment to maintaining and improving her health and well-being. Shante has been selecting healthier food options, increasing her water intake and incorporating swimming, gym time, and walks; both in her neighborhood and when volunteering to walk greyhounds, which is supporting Shante to reach her community participation goals.

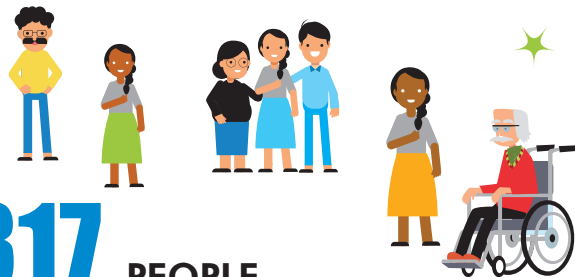
Shante is achieving outcomes such as hosting a Lemonade Stand to raise funds for her anniversary celebration and vacation plans. She thrives helping her peers by mentoring and encouraging them. With the dedicated support from her team, Shante is truly living a life of possibilities with the richness of life that we hope for everyone.





**304** PEOPLE ACHIEVING  
THROUGH COMMUNITY  
PARTICIPATION SUPPORTS

304 people received ongoing services in Community Participation Support Services, volunteering at **26** locations



**317** PEOPLE  
SUPPORTED IN EMPLOYMENT SERVICES

**90+** BUSINESS PARTNERS

**903** YOUNG CHILDREN  
RECEIVED EDUCATIONAL  
SERVICES



100% of all families surveyed saw notable progress since starting in the Applied Behavior Analysis classroom

**100%**  
FAMILY  
SATISFACTION



**263** highly qualified education and behavioral health professionals impacted the lives of children and families



**HOURS OF TRAINING**  
provided **50,793+** hours of training for employees and people we support



**50,793+**

**206** ADULTS LIVED HEALTHY,  
FULFILLING LIVES  
in SPIN supported homes



**534** CHILDREN  
received behavioral health services



2025

# OUR IMPACT

2025



**50** DIRECT SUPPORT  
PROFESSIONALS &  
FRONT LINE SUPERVISORS

have achieved national credentials



**66** DIRECT SUPPORT  
PROFESSIONALS

engaged in Ebadge credentialing program



**5,880** VOLUNTEER  
HOURS

supporting SPIN's mission in action



**287** PARTICIPANTS IN  
THE COMCAST  
DIGITAL LITERACY SERIES

exploring new and creative technologies to increase independence and inclusion in everyday life



**2,818** HEALTH SESSIONS  
ATTENDED

2,818 people participated in Healthy Lifestyle Sessions to improve their overall wellness



**\$500,000**



**CAPITAL ENHANCEMENTS**

invested in renovations and initiatives to residential homes and program areas



**\$484,434**

**DONATIONS**  
received by 1200 people believing in our mission

**INCREASED**

**21%**



**55**

**EMPLOYEE  
CAREER PATHING**

55 employees promoted through investment in career pathing opportunities

**16<sup>TH</sup>** CONSECUTIVE  
YEAR AS A  
TOP WORKPLACE



Named to Top Workplaces for 2025 – 16th consecutive year and ranked #10!

4 consecutive years as a USA TODAY top non-profit workplace





# GROW AT SPIN

SPIN's workforce is reaching for the stars and we are committed to celebrating and advancing their professional development through exciting credentialing opportunities. We proudly launched two new cohorts of the NADSP eBadge Academy, inviting 22 additional Direct Support Professionals to strengthen their skills, earn nationally recognized credentials, and demonstrate their dedication to quality support. In addition, 11 DSPs were successfully recertified through NADD, ensuring their continued expertise in supporting individuals with dual diagnosis.

To further reinforce SPIN's deep commitment, we introduced a new credential pay incentive structure, rewarding staff for their professional growth and achievement.

SPIN's investment in our workforce and ensuring the people we support receive the highest quality care from highly skilled, qualified and dedicated professionals is our priority. DSP Antonio McCall shared that "credentialing opportunities are more than just titles. They represent your commitment to personal and professional growth. They are a testament to your dedication and a step toward becoming the best version of yourself. Take the leap, invest in your growth, and know that your efforts will be rewarded in ways you may not even imagine right now." Antonio, who already holds his NADD certification, has successfully completed the DSP-1 and DSP-2 and is currently working towards earning his DSP-3 credential!

# SHAUN'S SUPER POWER

Shaun's life is full of possibilities at home, work, and in the community and advocacy has been integral to his success. With the support of his family, his Direct Support Professional, Heidi and SPIN team, Shaun lives an active life through competitive employment at The Law Offices of John Hill where he is celebrating 12 years and gives back to his community through volunteering at the Quakertown Library, PBS, and ArtsQuest.

Despite his success, the road has not been easy. Shaun has encountered many obstacles due to complex funding systems, delays in funding, and the uncertainty of sufficient resources to plan for his future. Shaun utilizes a Dynavox and his team

is unwavering in ensuring that his voice is heard in every action and interaction. Through daily advocacy and education in the community, Shaun has built meaningful relationships, is a role model, and has become a true champion for change.

Shaun's mom, Colleen, is a staunch advocate and has taken his advocacy efforts statewide, traveling to the State Capitol to meet with legislators, join rallies, and share his story. Shaun is doing everything he can to promote a brighter future for all and his story is a reminder of the power of every voice as we work together to advocate for change!







# SPIN RECOGNITION

## CLINICALLY ENHANCED TOP TIER DESIGNATION

SPIN was designated as a Clinically Enhanced top tier provider of Residential Services by the Office of Developmental Programs

## TOP WORKPLACES 2025

*Philly.com, The Philadelphia Inquirer and Daily News*

SPIN was a Top Workplace for the sixteenth consecutive year and was ranked #10

4 consecutive years as a USA TODAY top non-profit workplace

## POINTS OF TRANSFORMATION AWARDS

*The City of Philadelphia Department of Behavioral Health and Intellectual disAbility Services*

*Communication Connection Award*  
Caitlin Breen & Chelsea Titlow

*Early Intervention Award*  
Beth Huertas

*LifeSharing Award*  
Jacqueline Berrian

*Residential Award*  
Derricka Lawal

*Treatment Staff Award*  
Michele Toughill

*Leadership Award*  
Judy Dotzman

## EMPLOYER OF CHOICE

*In recognition of SPIN's welcoming and sustainable employment practices*

## KEYSTONE STARS

*Pennsylvania Office of Child Development and Early Learning*

Awarded the highest quality ratings for all four early childhood education centers

## NATIONAL ASSOCIATION FOR DUAL DIAGNOSIS (NADD) ACCREDITATION

SPIN's Behavioral Health Residential program was accredited for excellence in dual diagnosis treatment

## EVIDENCE-BASED PRACTICE DESIGNATIONS IN BEHAVIORAL HEALTH SERVICES

CBH has redesignated SPIN in the areas of Applied Behavior Analysis (ABA) & Ecosystemic Structural Family Therapy (ESFT)

## GOLD EQUITY AWARD

*Pennsylvania's Equity in Early Childhood Education Champion Gold Award*



# Statements of Financial Position

	Year Ended June 30, 2024	Year Ended June 30, 2023
<b>Assets</b>		
Current assets we expect to use in one year	\$ 19,161,000	\$ 19,117,000
Right-of-use assets - operating	\$ 1,890,000	\$ 1,937,000
Net book value of property, building and equipment	\$ 18,554,000	\$ 19,901,000
<b>Total Assets Available</b>	<b>\$ 39,605,000</b>	<b>\$ 40,955,000</b>
<b>Liabilities and Net Assets</b>		
Obligations for the coming year	\$ 7,693,000	\$ 8,520,000
Obligations to pay through 2040	\$ 7,003,000	\$ 7,732,000
<b>Total Obligations</b>	<b>\$ 14,696,000</b>	<b>\$ 16,252,000</b>
<b>Leaving Net Assets of</b>		
Unrestricted	\$ 24,830,000	\$ 24,626,000
Permanently Restricted	\$ 79,000	\$ 77,000
<b>Total Net Assets</b>	<b>\$ 24,909,000</b>	<b>\$ 24,703,000</b>
<b>Total Liabilities and Net Assets</b>	<b>\$ 39,605,000</b>	<b>\$ 40,955,000</b>

# Statements of Activity

	Year Ended June 30, 2024	Year Ended June 30, 2023
<b>Revenues</b>		
Commonwealth of PA/Office of Developmental Programs	\$ 57,446,000	\$ 58,395,000
Childhood Education Grant Income	\$ 2,958,000	\$ 2,896,000
CARES Act		\$ 1,370,000
ARPA Funding	\$ 2,205,000	
Philadelphia Community Behavioral Health	\$ 6,460,000	\$ 4,100,000
Head Start/Pre-K and Other Federal, State and Private Grants	\$ 5,691,000	\$ 6,738,000
Service Contracts and Other	\$ 4,745,000	\$ 8,133,000
Net Contributions	\$ 409,000	\$ 378,000
<b>Total Revenues</b>	<b>\$ 79,914,000</b>	<b>\$ 82,010,000</b>
<b>Expenses</b>		
Program Services	\$ 70,550,000	\$ 73,064,000
Administrative and Fundraising	\$ 9,158,000	\$ 8,071,000
<b>Total Expenses</b>	<b>\$ 79,708,000</b>	<b>\$ 81,135,000</b>
<b>Change in Net Assets for the Year</b>	<b>\$ 206,000</b>	<b>\$ 875,000</b>
<b>Net Assets, Beginning of the Year</b>	<b>\$ 24,703,000</b>	<b>\$ 23,828,000</b>
<b>Net Assets, End of the Year</b>	<b>\$ 24,909,000</b>	<b>\$ 24,703,000</b>



GIVING PARTNERS  
7/1/24 - 6/30/25

Thank you for your generous donations to SPIN

Your donations help provide the highest quality care and services to children and adults with autism and intellectual disability and early childhood education. With your help, we will continue to provide a Life of Possibilities for all.  
You truly make the difference for the SPIN community, and we are extremely grateful!



\$50,000+

Joel & Sharon Koppelman

\$10,000-\$49,999

Judy & Doug Dotzman

Eric Drossner,  
The Haverford Trust Company

Gregory Grant,  
Alliant Insurance Services, Inc.

Andrea & Geoffrey Temple

The Aileen K. and  
Brian L. Roberts Foundation

Kids N Hope Foundation

Rite Aid Foundation

\$5,000-\$9,999

Kevin Dougher,  
Johnson, Kendall & Johnson

Kathy Drew

Susan & Robert Ivey

Ken Karle,  
Willits Pharmacy Services

Scott Koerper,  
Scott Mechanical Inc.

Mindy Lederhandler Lutts &  
Robert Lutts

Eleanor Scheidegg

Edward Schuman & Amy Zucker

Remax Keystone,  
Mindy Lederhandler Lutts

\$2,500-\$4,999

Michael & Jennifer Hughes

Kieran & Gloria McKenna,  
Kieran McKenna Flooring Inc.

Chester Orzechowski

Rebecca & John Randall

Kreischer Miller

Mat's Pharmacy & Medical Supply  
Philadelphia Insurance Companies

ShopRite of Roosevelt Boulevard

TD Bank

\$1,000-\$2,499

Stewart & Phyllis Barbera

Jeffrey Beck

Kate & Lou Citro

Frank Dellisanti

Greg & Megan Grant

Stacey & Barry Groder

Margaret Harkins

Jack & Carol Lenhart

Marie Leonard & Michael Zaneski

Meaghan Lutts

Patrick & Michelle McCormick

Courtney Mitchell

Patricia & Joseph Parisi

Diane Peterman

George & Patty Poporad

Cynthia & Mike Porter

Gregory Rossi,  
Gregory Rossi Plumbing &  
Heating LLC

Mark Toro,  
Toro Fence Company

David & Patricia Valeno

Pat White

Comcast NBC Universal

Defiance Lodge

Long Nyquist & Associates

Sterling-Prueitt Charitable Fund

Steuben Lodge Charity Foundation

\$500-\$999

Clarence Armbrister

Regla Baez

Felicia & Jay Seravalli

Frank & Leslie Brown

Bill Cahill,  
Cahill Maintenance Service Inc.

Robert Castorani

Kim & Greg Chapman

Annemarie Clarke

Anna Coccitti

Andrew DeMarco,  
DeMarco Contracting &  
Restoration

Maureen & Thomas Devaney

Katie Dougherty

Janet Edwards

Todd D Feldman

Marie Grimaldi

Sharon Heileman

Doug Lane

Ryan & Jasmine Losinno

Rosesylvia Mee

Sharon Mehlman

Dave & Sandi Miazio

Cindy O'Neill

David & Nancy Waters

Jen Williams

Sibo Zhang

Mark & Beth Zinman

Activcore

Fidelity Alarm Company

Franklin Mills  
Advisory Council Organization

Hunter Mechanical, Inc.

Kingsbury

Walker Lodge No. 306

Yocco's

\$250-499

Kayla Barker

Janelle Benson

Peg Capasso

Suzanne Cerruti

Andrea Consigny

Nakema Craig

Casimir & Dorothy Czarnecki

Sheila Dolan

Lance & Ally Dotzman

Justin & Danielle Dotzman

Yvonne Douglas

Jennifer Dragon

Michele Dwyer

Brian Edwards

Janet Galbert

Marcia Giarratana

Joanne Gillen

Erik & Debra Gold

Marlene Goldwein

Mary Lou Haughney

Angela Hoffman

Pamela Hoffman

Steve Hopkins

Colleen Horcher

Mary Jacobs

Tiara Jones

Linda Kehoe

Christine Kemeter

Frank & Lynn Kolpak

Chelsea Lutts & Andy Lane

Bruce Mager & Heidi Graynor

Seymour & Carol Mager

Richard Markham

Kathleen & Robert McHale

Thomas & Debra Miller,  
Northeast Washer Service

Kristen & Nelson Montanez

Christian Muniz

Kathy & Terry Neumeister

Michael Porter Jr.

Deborah A Ridge

Marianne & James Roche

Michele Rosenfelt

Jamie Scarboro

Laura & Eric Silsby

Kate Soda

Rick Sorkin

Kathy Sykes

Arlington Heritage Group

Burns Funeral Home, Inc.

Emerald Business Supply, Inc.

Milillo Event Group

Passpoint Security

Patriot Sprinkler Co.

Philadelphia Federal Credit Union

Rostair Foundation

Special Touch Dentistry

Torresdale Women's Committee

\$100-\$249

Tina Allen

Faye Allen-Buckson

Maryellen Anick

Sara Arch

David Armbrister

Cheryl Armbrister Nichols

Lamont Bates

Ronald & Ellen Becker

Hannah Berger

Donna Bernstein

Sharina Blackshear

Dwanae Bowens

Melissa Bradby

Valentina Brice

Taryn Brown

Teresa Brown

Werner Burkhalter

Nicole Burns

Jessica Bustin

Eden Caprood

Dena Condron

Calvin & Caitlin Cooper

Cory Cooper

Mace Cooper-Drew

Eileen Cove

John & Michele Crandley

Matt Creveling

Charmaine Crossland

David Binder

Lori Deegan

Barbara & Neil Demchick

Linda M. Devereaux

Jeaneen Diaby

Caitlyn Diviny

Arthur Donley

Elissa Dotzman & Jake Freed

Laura Eck

Constance Elia

William & Joan Engle

Jean Evans Antoine

Barry Fabius

Jennifer Fenton

Frances Field

James Flynn

Marie Foley

Amy Forsyth

LaToya Franklin

Tracie Funderburk

Michele Gay

Maureen Geiss

Enoch George

Ryan Gilmore

Cassandra Gilreath

Steve Glazier

Sherie Gorley

Stephanie Grabell

Andre' Graves

Marvin & Sheila Greenberg

Chelsea Greenspon

Sharte Hamilton

Stella Hearn

Dana Heileman

Pamela Henderson

Erica Henry

Antoinette Hinkle

Julie Hogue

Amy Howlett

Kristen Jackson

Beatrice Johnson

John Junod Jr.

Rosemary & Joe Karabinos

Richard S. Kassoway

Christine Keene

Sandra Kelson

Cheryl Kirby

Matt Kolla

Deborah Korus

Christina Kreckmann

Jessica Kress

Fern LaPoten

Lavina Laughlin

Steve & Lisa Lax

Jessica Lax

Megan Leighton

Irina Lev

Loretta Lewis

Sharlene Lipkin & Willie Hurok

Renee Liss

Elizabeth Loden

Jasmine Louden

Erica Lowry

Corey Lutts

Lenny Lutts Sr.

Susan MacDonald

Lily Maina

Joseph & Lana Mandale

Kelly Marascio

Beth A Marin

Jodi & Robert Marks

Donna Martin

Doris Matanoski

Lindsay Matthews

Kathy McAnulty

Theresa McCabe

Thomas McClintock

Michael McFadden

Barbara McGovern

Mary McGovern

John & Theresa McMahan

Patrick McMenamin

Miriam & William McMullen

Austin A. Meehan III

Melissa Mezicco

George Millard

Francis Moroz

Joseph Murphy

Laurence Needleman

Robbin Nocella

Natasha Nunez

David & Fran Orkin

Beth Orvis

Bill Parzych

Tina Prout

Frederick Queene

Anastasia Ramirez-Grant

Jean Reagan

Diane Repash

John Riley

Megan Riley

Judy Risner

Archillies Roberts

Victor Robles

Tiffanyann Rodriguez &  
Alfred Sarmiento

Joseph Rutkowski

Mark & Silva Santerian

Jenifer Schaadt

Grainne Schroeder

Kate Schultz

Brandon & Janelle Schulze

Louie Scottoline

Tanya Scott-Wessels

Tara Sebazco

Susan Seidner



GIVING PARTNERS  
7/1/24 - 6/30/25

Loretta Shields  
John & Patricia Shinn  
Barbara B Shotz  
Elizabeth Silverthorn  
Kamil Simmons  
Elizabeth Sklar  
Alvina Smith  
Kristin Smith  
Nick Smith  
Florence Snyder  
Chris Spross  
Karma Strydesky  
Dennis Taub  
Justin Taylor  
Taylor Thomas  
Jennifer Thompson  
Michele Toughill  
Paula Urmson  
Michelle Villalobos  
Jamie Viviano  
Emily & Charles Wagner  
Capri Wagner  
Timothy & Rita Walls  
Thomas E. Weber  
Richard Webster  
Alec Weinstein  
Kurt Werner  
Barbara Wertheimer  
Gretel Wheaton-Rauls  
Katie Wible  
Kimberley Williams  
Chelsea Witt  
Sheryl Woods Olson  
Tracey Woods  
Mary Young  
Jeffrey Zaveloff  
Da Zhang  
Informed Systems, Inc.  
Jim Junod Lodge  
Philadelphia  
Coordinated Health Care  
Quadient, Inc.

Solebury School  
Valley Property Maintenance  
  
**\$50-\$99**  
Richard A. Adamsky II  
Larry & Leslie Aita  
Joanne & Joseph Baillie  
John & Phyllis Beck  
Michelle Begley  
Walter Blichasz  
Jaclyn Braker  
Jean Brennan  
Joan Burrell  
Ilene & Gregg Cady  
John Capella  
Laurie Clabbers  
Brian Cummings  
Michael DiDomenico  
Michela DiDomenico  
Michael Dimperio  
Susan Feltwell  
Larry & Laini Freed  
Laverne Freeman  
Elizabeth Gates  
Mark Gress  
Karen Gruber  
Monica Harris  
Eileen Himes  
Jose K Kandammalil  
Michelle Kaschak  
Dina McCaffery  
Billie McClintick  
Megan McManus  
Donna Meehan  
Miranda Midiri  
Jacquie Nace  
Gabrielle Nirenberchik  
Marcella A Odare  
Katherine Prieto  
Mike Quattrone  
Sarah Ryan  
Marianne Schafer

Lynn Schroeder  
Gary & Amy Shelby  
Barbara Sklar  
Mary Anne Smith  
Karen Smith  
Lisa Titlow  
Eileen Waskiewicz  
Yoko Welch  
Ron Yean  
Arlene & Louis Zarenkiewicz  
ACME  
  
**Grants**  
Franklin Mills Advisory Council  
Rite Aid KidCents Foundation  
Comcast NBCUniversal  
PECO Energy  
Ambassadors Program  
Department of Community  
Economic Development Grant  
Philadelphia Department of  
Behavioral Health and  
Intellectual disAbility Services

**Corporate Employee  
Giving Programs**

Exelon Corporation  
Employee Giving Program  
Boeing Company  
Pfizer Foundation  
Employee Giving Campaign  
United Way  
Wells Fargo  
Community Support Campaign  
Aetna Employee Giving Campaign  
Vanguard  
Employee Giving Campaign  
PricewaterhouseCoopers LLP  
Ally Employee Giving Campaign  
FedEx Employee Giving Campaign  
UPS Employee Giving Campaign  
Deloitte  
Employee Giving Campaign  
Comcast NBCUniversal  
Employee Giving Campaign

TD Bank  
Employee Giving Campaign

**Special Giving/  
In Kind Gifts**

Beyond Literacy  
Burlington  
Catholic Community Services  
Cradles to Crayons  
Custodes Pacis Lodge 2085  
Frankford Candy  
Helping Hands  
Honey's Angels  
Nancy Toland  
One Warm Coat  
Schneider Electric  
Siemens  
Trane



SPIN EVENTS

Annual Membership Campaign - ongoing  
Member Appreciation Gala  
SPIN Live  
Lehigh SPINGO  
Partners for Possibilities  
Golf Tournament

[www.spininc.org/events](http://www.spininc.org/events)

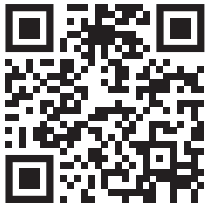


HOW CAN I HELP

Support a Life of Possibilities by  
making a donation, volunteering or  
attending a SPIN event.

All donations benefit non-funded services and  
facilities for children and adults with  
autism and intellectual disability.

Thank you for your ongoing belief, commitment and partnership  
For more information on donating, volunteering and  
getting involved go to [spininc.org/donate](http://spininc.org/donate)



Stay connected. Visit us at [www.spininc.org](http://www.spininc.org) or  
on [facebook.com/SPINinc](https://facebook.com/SPINinc).





# Thank You

For Supporting a Life of Possibilities



SPIN • 10501 Drummond Road • Philadelphia, PA 19154  
1-844-SPIN-CAN • [spininc.org](http://spininc.org) • [facebook.com/SPINinc](https://facebook.com/SPINinc)